

**CITY OF LOMITA  
LIST OF CITY OFFICIALS**

ELECTED OFFICIALS

Mayor	William Uphoff
Mayor Pro Tem	Mark Waronek
Council Member	James Gazeley
Council Member	Cindy Segawa
Council Member	Barry Waite

CITY STAFF

City Manager	Andrew Vialpando
Assistant City Manager	Gary Sugano
City Attorney	Trevor Rusin, Best Best & Krieger
Administrative Services Director	Susan Kamada
Community & Economic Development Director	Brianna Rindge
Parks & Recreation Director	Emma Kelley
Public Works Director	Carla Dillon

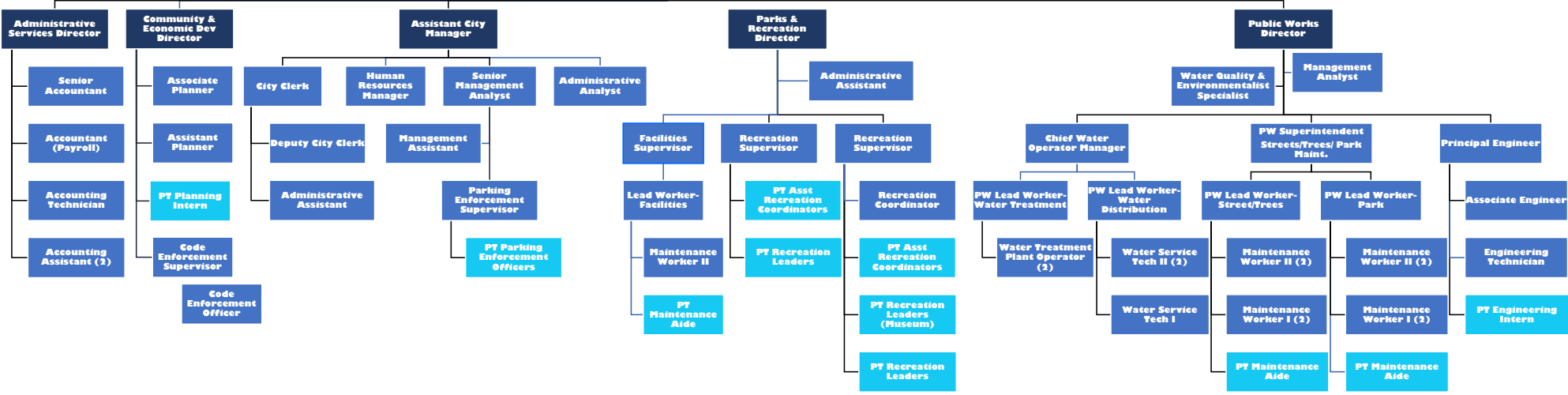
**Citizens of Lomita**

**City Council**

**Planning Commission (7)  
Public Safety & Traffic Commission (5)  
Parks & Recreation Commission (5)**

**City Attorney**

**City Manager**



**CM and Directors (6)**  
**Full-Time Employees (47)**  
**Part-Time Employees**

## PROFILE OF LOMITA

The City of Lomita is located 26 miles south of downtown Los Angeles and is bounded by the City of Torrance on the north and west, the City of Los Angeles to the east, and the City of Rolling Hills Estates on the southwest. Southeast of Lomita is the City of Rancho Palos Verdes and unincorporated County land. The City's total land area is 1,196.8 acres or 1.97 square miles.

The City of Lomita "began" as a residential tract (Lomita Subdivision) in the early 1900s. In 1907, the Lomita Subdivision covered seven square miles. As the lots were sold, water wells, a school, a general store (with a post office), and other businesses soon followed. In 1909, churches were built and in 1920, the Bank of Lomita was established.

In 1923, oil in the area was discovered while drilling for water. The resulting "oil boom" in the area led to the conversion of residential lots into oil fields. Rapid growth occurred in the Lomita area, as egg ranches, fruit orchards and agricultural uses formed the community. Lomita became a center for the agriculture and oil extraction activities in the South Bay area.

In the 1940s and 1950s, portions of the Lomita Subdivision were annexed by adjacent cities. By 1964, only 1.97 square miles of the Lomita Subdivision remained when the City of Lomita finally incorporated. Lomita is a contract City with a Council-Manager form of government. The City Council is elected at large to four-year terms. The Mayor is selected by the City Council for a one-year term.

Today, the City is almost completely developed, and the remaining vacant land is limited to scattered parcels. Existing development in the City is characterized by residential neighborhoods at varying densities, with commercial uses concentrated along Pacific Coast Highway, Lomita Boulevard, Crenshaw Boulevard, Narbonne Avenue and Western Avenue.

The Lomita Railroad Museum is the only one of its kind west of Denver, Colorado, and was made possible through the generosity of Mrs. Irene Lewis who donated the museum to the City in honor of her late husband. Complete authenticity is the hallmark of the museum that is dedicated to the proud era of the steam engine.

In 1990 the City took over Water District 13 from the County of Los Angeles and has been successfully operating its own water department ever since.

## FACTS AND FIGURES ABOUT LOMITA

	Number	Percentage
Total Population	20,921	100
Under 20	4,836	23.11
20 to 29	2,509	11.99
30 to 44	4,019	19.21
45 to 64	5,749	27.48
65 and older	3,808	18.20
Males	10,230	48.90
Females	10,691	51.10
Median Age	40.5	
One Race	17,600	84.1
American Indian and Alaska Native	251	1.20
Asian	3,524	16.84
African American	1,209	5.78
Native Hawaiian and Other Pacific Islander	156	0.75
White	8,637	41.28
Other Race	3,823	18.27
Two or More Races	3,321	15.87
Hispanic (any race)	7,691	36.76
Total Housing Units	8,593	
Occupied Housing Units	8,273	96.28
Total vacant housing units	320	3.72
Occupancy		
Owner	3,830	46.30
Renter	4,443	53.70
Average persons per:		
Household	2.49	
Family	3.22	

*Facts derived from the 2020 U.S.Census*