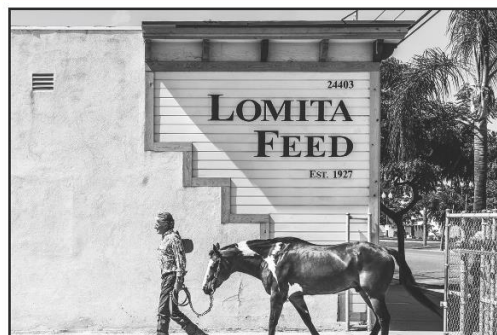




NEW & UPCOMING PROJECTS

DOWNTOWN LOMITA

COMMUNITY & ECONOMIC DEVELOPMENT DEPARTMENT



1. Lomita Feed Retail Expansion
24403 Narbonne Ave.
(Final stages of plan review)



3. Kemet Dekor
24610 Narbonne Ave.
(Now open)



5. The Slip Bar & Eatery
24503 Narbonne Ave.
(Under construction)



7. 16-Unit Condominium Development
245th St & Woodward Ave.
(Under construction)



2. Cream Pan Bakery
24020 Narbonne Ave.
(Opening April 2023)



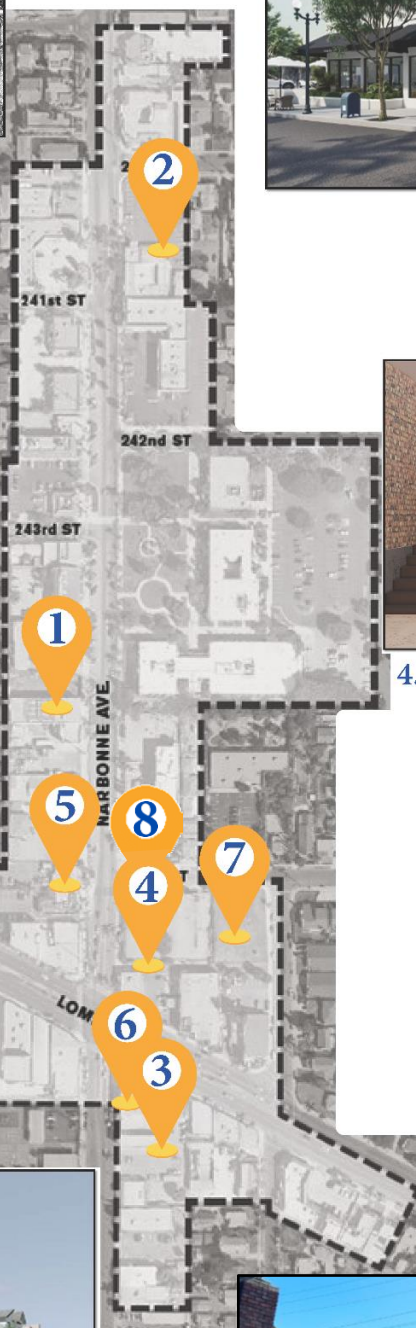
4. Public Paseo - Alley Vacation
24516 Narbonne Ave.
(In review)



7. Well Worn Art
24600 Narbonne Ave.
(Now open)



8. Burnin Daylight Brewing Company Outdoor Dining
24516 Narbonne Ave.
(In plan review)



NEW & UPCOMING PROJECTS

CITYWIDE

COMMUNITY & ECONOMIC DEVELOPMENT DEPARTMENT



1. KAIA Luxury Apartments (Picerne Group)
220 multifamily units
24000 Crenshaw Blvd.
(Now leasing)



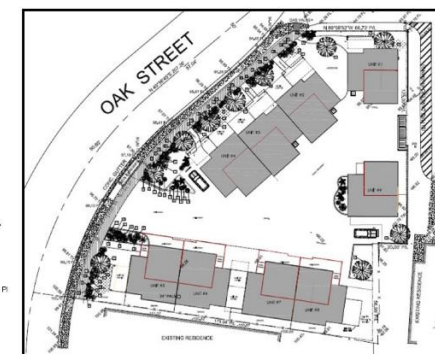
3. WDC Kitchen & Bath Center
at Atrium Design Center
2413 Pacific Coast Highway
(Now open)



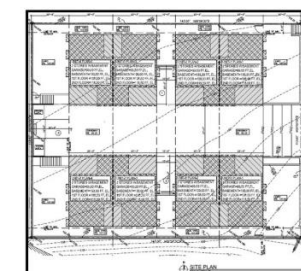
5. Target
2130 Pacific Coast Highway
(Opening fall 2023)



2. Brownstone Mixed-Use Development
15 Condominium Units & Medical Office
2200 248th Street
(Office open; residential opening soon)



4. Nine-Unit Townhome Project
26016 Oak Street
(Final stages of plan review)



6. Eight-Unit Development
26109 Narbonne Ave
(Construction to be completed April 2023)



7. 11-Unit Apartment/Mixed-Use Development
24830-24838 Narbonne Ave.
(Under construction)

